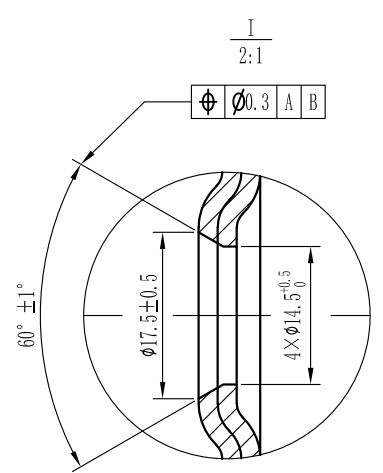
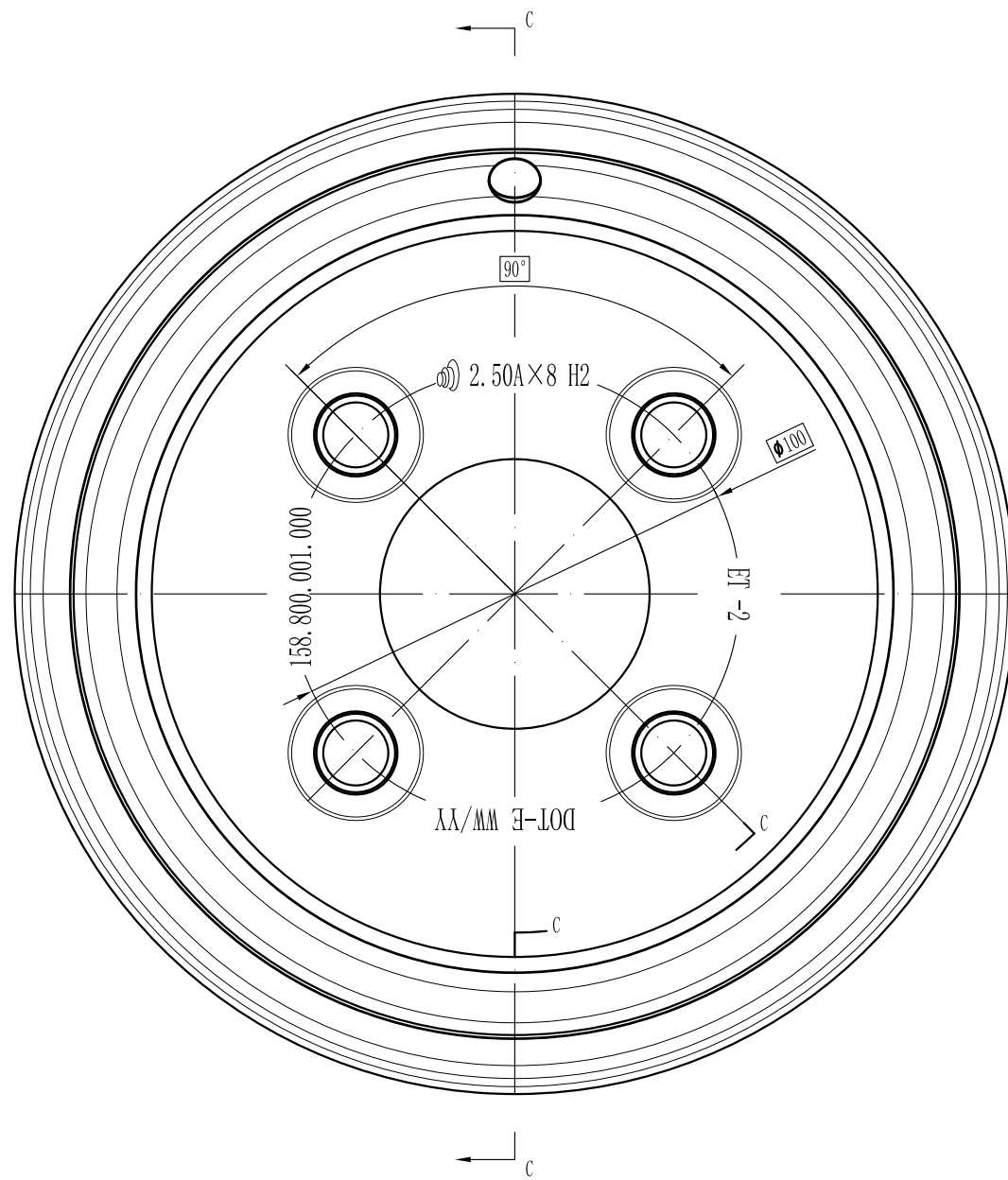
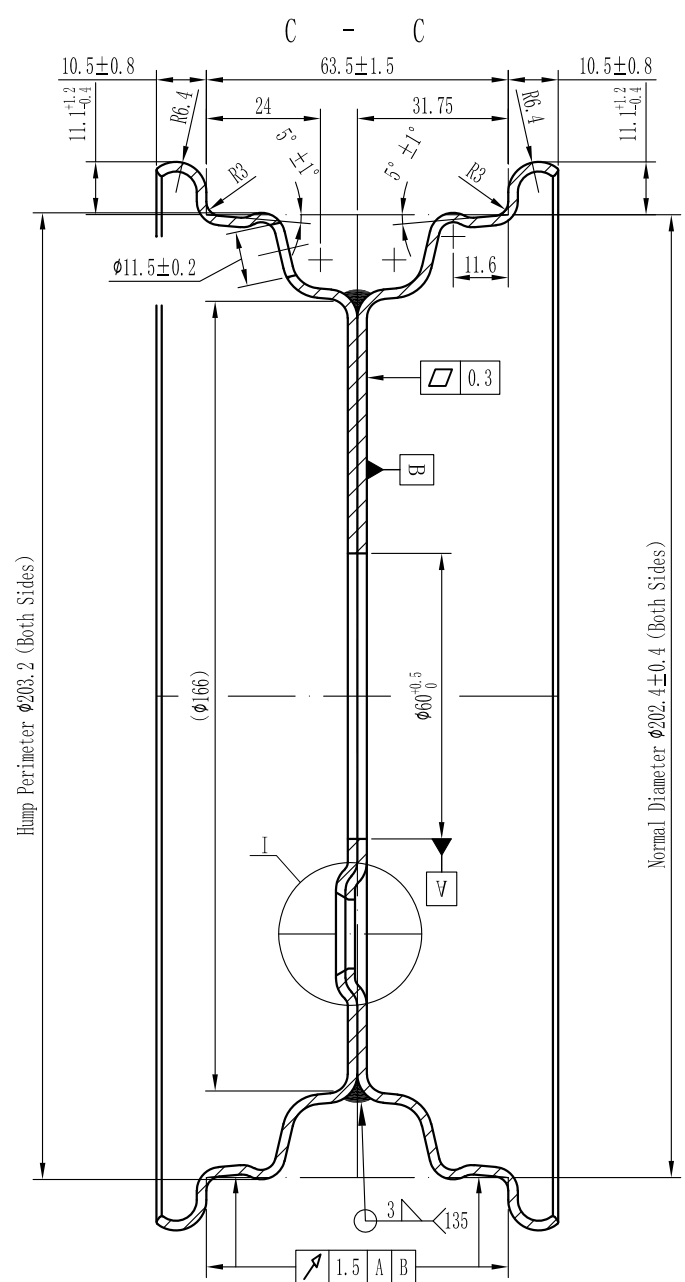


标记/CHG	区域/ZONE	图样版本/DWG REL	更改日期/DATE	更改描述 / REVISION HISTORY	文件号/PCR NO.	工程师/DRE
		A/0	2024.12.17	First Edition		莫曦



- Technical Requirement
- 1 Wheel undercoat is black cathodic electrophoretic paint, Undercoat thickness not less than 20 μm; Topcoat color per the customer's requirements total thickness is from 60um to 120um.
 - 2 Any part of the wheel is not allowed to have cracks and material interlayer defects; No obvious scratches, bump marks and welding slag and other attachments are allowed.
 - 3 Weld seam should be flat, without pores, slag, etc., not allowed to have welding leakage, burn through, crack, weld, bite edge, weld tumors and other defects, welding seam should not deviate from the welding position.
 - 4 No obvious burr or sharp edge is allowed in center hole, bolt holes, hand holes and flanges.
 - 5 The surface of the paint film should be smooth, without obvious color difference, hanging, orange peel, bare bottom, pinhole, foaming and rising defects.
 - 6 The valve hole should be in the axial symmetrical position of butt weld; The valve hole is collinear with the center line of two hand holes and the bolt holes (as shown in the figure).
 - 7 The wheel mark should be clearly visible, and not overlap with valve hole and butt weld.
 - 8 Wheel Mark typeface: Song, Size: five; its content:
 2.50A X 8 H2 ET-2 DOT-E WW/YY 158.800.001.000

2		右半轮/Right half	1	SPHC	2.0mm	
1		左半轮/Left half	1	SPHC	2.0mm	
序号ITEM	零件图号PART NO.	名称NAME	数量QTY	材料MAT	厚度THK	备注REMARKS
设计DES.	莫曦	日期Date	8×2.50A		CL02A07	
审核VER.	胡文福	2024.12.17	钢制车轮Steel Wheel		CL8×2.50A-0301-00	
会签REV.	李德军	2024.12.17	版本REL.	重量WE.	比例SC.	图幅Size
标检STA.						第1页,共1页/Sheet 1 of 1
批准APP.	倪小飞	2024.12.17				