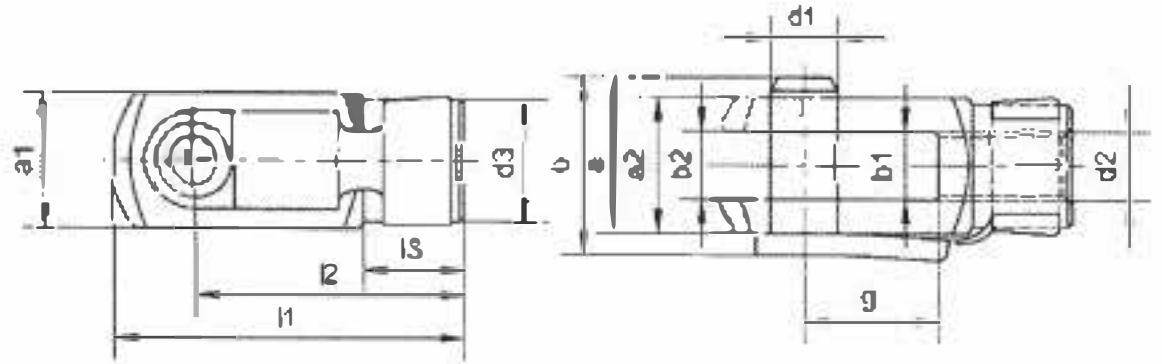


Clevis joints

DIN71751



Clevis joints similar to DIN71751, Form A

Item	d1 h11	g ±0.5	a	a1 h11	a2 h11	b	b1 h13	b2 Perm. variation	d2		l1 ±0.5	l2		l3 ±0.3	Mass (kg/pc)
									Regular thread	Fine-pitch thread		Perm. variation			
A4x8	4	6	9.5	8		11	4		M4x0.7		21	16		6	0.006
A5x10	5	10	12	10		13.5	6		M5x0.8		26	20		7.5	0.012
A5x20	5	20	12	10		13.5	5		M5x0.8		36	30	±0.3	7.5	0.016
A6x12	6	12	14	12		16	6		M6x1		31	24		9	0.020
A6x24	6	24	14	12		16	6		M6x1		43	36		9	0.026
A8x16	8	16	19	16		21.5	8	±13	M8x1.25		42	32		12	0.048
A8x16FG	8	16	19	16		21.5	8		M8x1		42	32		12	0.048
A8x32	8	32	19	16		21.5	8		M8x1.25		58	48		12	0.066
A8x32FG	8	32	19	16		21.6	8		M8x1		58	48		12	0.066
A10x20	10	20	23	20		26	10		M10x1.5		52	40		15	0.093
A10x20FG	10	20	23	20		26	10		M10x1.25		52	40		15	0.093
A10x40	10	40	23	20		26	10		M10x1.5		72	60		16	0.136
A10x40FG	10	40	23	20		26	10		M10x1.25		72	60		15	0.138
A12x24	12	24	28	24		31	12		M12x1.75		62	48		18	0.154
A12x24FG	12	24	28	24		31	12		M12x1.25		62	46		16	0.154
>>> A12x48	12	48	28	24		31	12		M12x1.75		86	72		16	0.210
A12x48FG	12	48	28	24		31	12		M12x1.25		86	72	±0.4	16	0.210
A14x28	14	28	31	27		34	14		M14x2		72	58		22.5	0.225
A14x28FG	14	28	31	27		34	14	+0.7	M14x1.5		72	58		22.5	0.225
A14x56	14	56	31	27		34	14	+0.15	M14x2		101	85		22.5	0.309
A14x56FG	14	56	31	27		34	14		M14x1.5		101	85		22.5	0.309
A16x32	16	32	36	32		39	16		M16x2		83	64		24	0.351
A16x32FG	16	32	36	32		39	16		M16x1.5		83	64		24	0.351
A16x64	16	64	36	32		39	16		M16x2		115	96		24	0.485
A16x64FG	16	64	36	32		39	16		M16x1.5		115	96		24	0.485
A20x40	20	40	45	40		50	20		M20x2.5		105	80		30	0.680
A20x40FG	20	40	45	40		50	20		M20x1.5		105	80		30	0.680